

ArtNet Player 4



ART
NET
ETHERNET

Art-Net™ Designed by and Copyright Artistic Licence Holdings Ltd.

DMX[®]
4
ALL

Description

The **ArtNet Player 4** is a 4 universe ArtNet-Player and a 1 universe DMX-Player. Programs stored on a SD-card can be outputted Stand-Alone.

At the first DMX-output the first DMX-universe will be displayed, so DMX-capable devices can be controlled directly with the **ArtNet Player 4**.

A Remote-option via external DMX-signal serves integrating in existing systems.

Furthermore there are 4 digital LongDistance-inputs for controlling via deducted buttons.

The programming occurs only via the SD-card. So, each setting is available depending on the particular project.

A user-friendly configuration via the DMX-Configurator allows a fast and uncomplicated setting of all parameters and the creation of programs which should be replayed.

Data Sheet

Power supply:	7-24V DC
Output:	Art-Net™: 2048 channels DMX: 512 channels
Remote-options:	external DMX signal External Art-Net™ signal Android App: DMX4ALL Remote IOS App ANP Remote
LongDistance-Inputs:	Next program Brightness setting On/ Off Start/Stopp
Other features:	RGB filter Firmware-Update-function
Dimensions:	70mm x 90 mm x 60mm

SD-Card

The **ArtNet Player 4** needs a SD-card for the program memory. This will be inserted with the contacts downwards and the tapered side to the right.

By inserting the SD-card slide in the card as far as a clicking sound is audible and a resistance is perceptible.

By removing the SD-card push the card again until the clicking sound is audible. The card will be pushed out for ca. 1 cm and can be removed manually.

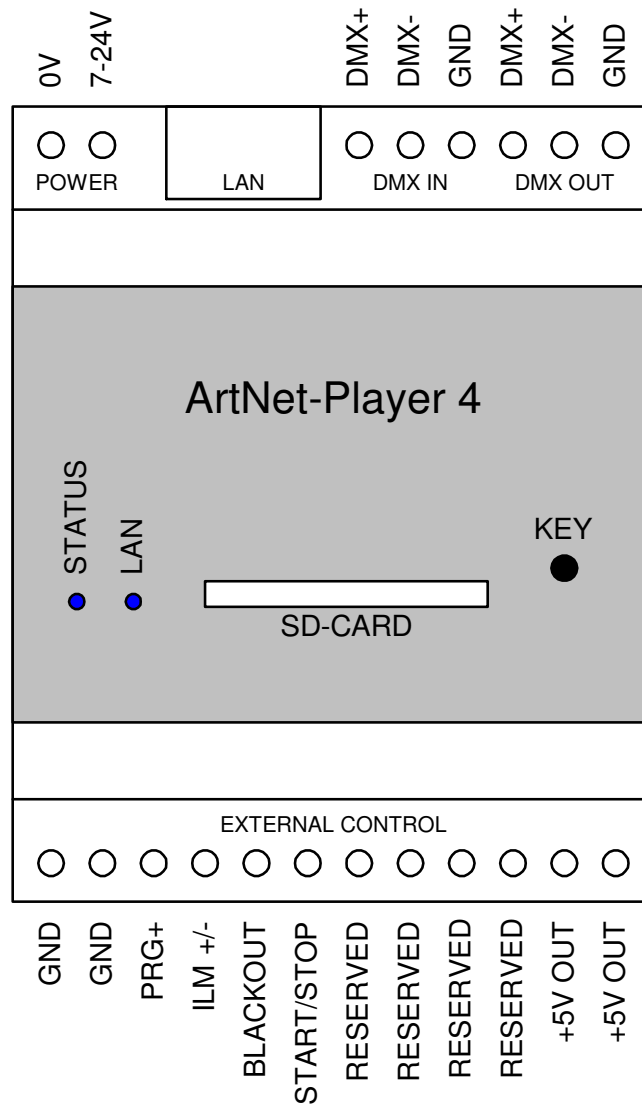


Use only SD-cards SDHC-cards class 4 or higher.

The SD-card must be formatted with the File-system FAT16 or FAT32. The file-names should be 8 signs for maximum and there must not be used a folder on the SD-card.

It will be recommended not to rename the files generated from the DMX-Configurator.

Connection



LED-Display

LAN

The LAN-Led flashes by connected net work cable.

STATUS

Flashing:	Do not insert SD-card
Lights permanently:	ArtNet Player 4 works normally

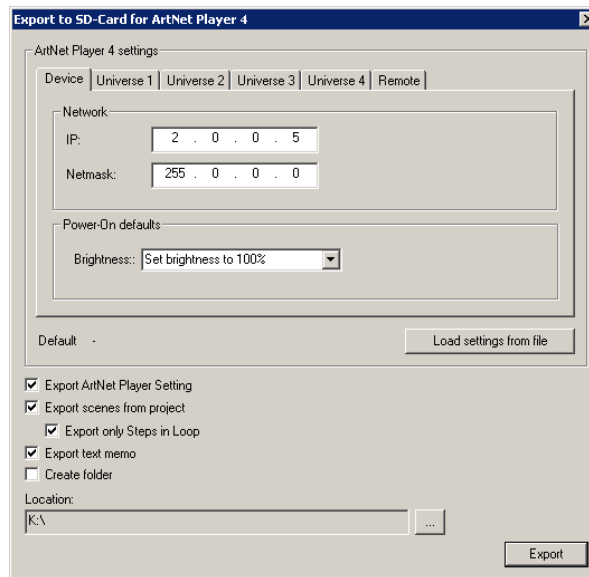
Configuration / Generate programs

The settings configuration and generating the programs occur user friendly via the Windows-program DMX-Configurator.

The DMX-Configurator 4PIXX is available in the current version as download (www.dmx4all.de/support.html) .

Please refer the DMX-Configurators user manual how to execute the program creation.

After creating the programs the export is to perform under menu **Project**→**Export**→**ArtNet Player 4**:



The area **ArtNet Player Settings** contains the ArtNet Player 4 devices settings. These will be explained on the following pages.

Load settings from File reads the devices settings from an existing file which were created before. Please specify the config.cfg file here.

The remarkable export possibilities show which elements should be exported.

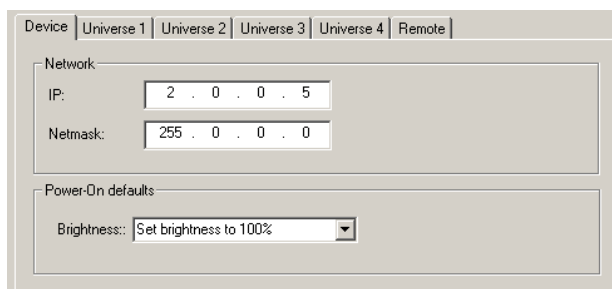
Export ArtNet Player Settings	The devices settings will be exported
Export scenes from project	The scenes included in the project will be exported
Export only Steps in Loop	Only the steps which were in one loop will be exported
Export text memo	A Memo.txt file will be exported
Create folder	Creates the exported files within a folder which will be generated. This option offers the possibility to store the exported files from a specific project to an external medium

Under **Location** you have to specify the path where the files should be written. Please choose directly the SD-card and don't create a folder to use the SD-card afterwards directly in the ArtNet Player 4 !

Export starts the export-process

Device Settings

Under **Device** within the ArtNet Player settings the IP and the subnet mask will be adjusted for the ArtNet Player 4.



The screenshot shows the 'Device' settings window with the following configuration:

Device	Universe 1	Universe 2	Universe 3	Universe 4	Remote
Network					
IP:	2 . 0 . 0 . 5				
Netmask:	255 . 0 . 0 . 0				
Power-On defaults					
Brightness:	Set brightness to 100%				



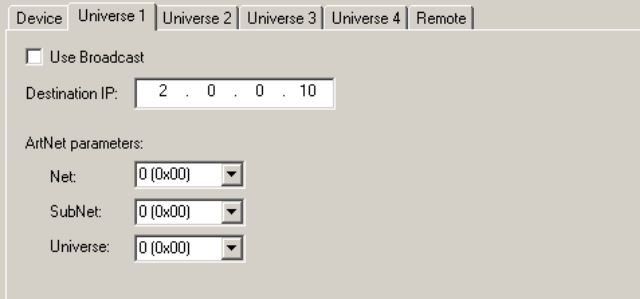
Each network device needs an own IP-address, so the assignment occurs clearly within the network. Use in accordance to the ArtNet-specifications the IP-addresses 2.x.x.x or 10.x.x.x .

Each other IP-address can also be used, e.g. 192.168.1.10 .
In this case the netmask must be adapted to 255.255.255.0 !

Furthermore the specifications for brightness (Brightness) after turning on must be configured.

Universe Settings

For each universe the target settings must be specified within the tabs universe 1 up to universe 4.



The screenshot shows a software interface with tabs for 'Device', 'Universe 1', 'Universe 2', 'Universe 3', 'Universe 4', and 'Remote'. The 'Universe 1' tab is active. It contains a checkbox for 'Use Broadcast' which is unchecked. Below it is a text field for 'Destination IP' containing '2 . 0 . 0 . 10'. Underneath is a section for 'ArtNet parameters' with three dropdown menus: 'Net' (0 [0x00]), 'SubNet' (0 [0x00]), and 'Universe' (0 [0x00]).

The **Destination-IP** shows the target-devices IP to which the universe should be send.

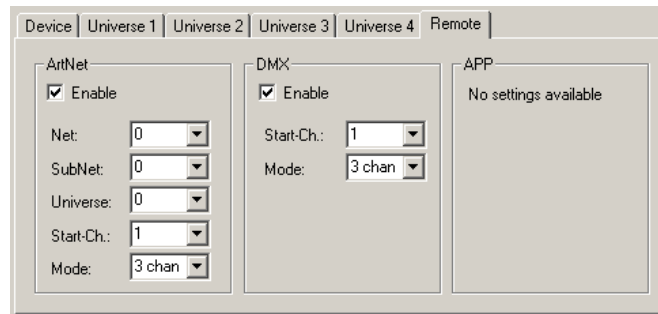
By activated **Use Broadcast** the universe will be send global to all devices, in this case the Destination-IP will not be needed.

Furthermore for each universe the ArtNet-parameters **Net**, **SubNet** and **Universe** will be specified for the target.

Remote Settings

The DMX-input, ArtNet input or the APP “DMX4ALL Remote” (Android) / “ANP Remote” (iOS) can be used as remote control for the ArtNet Player 4.

Activate within the configurations the remote-function and adjust the according parameters.

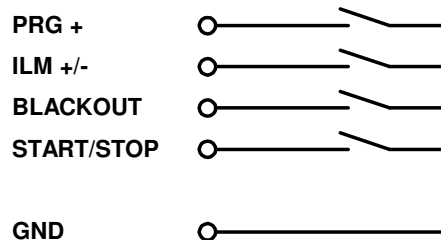


The using of the remote channels for ArtNet and DMX is shown in the following table:

	DMX channel	Function	Value	
3 channel mode:	1	Program	0-15	PRG1
			16-31	PRG2
			32-47	PRG3
			48-63	PRG4
			64-97	PRG5
			80-95	PRG6
			96-111	PRG7
			112-127	PRG8
			128-143	PRG9
			144-159	PRG10
			160-175	PRG11
			176-191	PRG12
			192-207	PRG13
			208-223	PRG14
			224-239	PRG15
			240-255	PRG16
	2	Speed	0-255	Slow → Fast
	3	Brightness	0-255	0% → 100%
6 channel mode:	1	Program	0-15	PRG1
			16-31	PRG2
			32-47	PRG3
			48-63	PRG4
			64-97	PRG5
			80-95	PRG6
			96-111	PRG7
			112-127	PRG8
			128-143	PRG9
			144-159	PRG10
			160-175	PRG11
			176-191	PRG12
			192-207	PRG13
			208-223	PRG14
			224-239	PRG15
			240-255	PRG16
	2	Speed	0-255	Slow → Fast
	3	Brightness	0-255	0% → 100%
	4	Filter RED	0-255	0% → 100%
	5	Filter GREEN	0-255	0% → 100%
	6	Filter BLUE	0-255	0% → 100%

Digital Inputs

The digital inputs PRG+; ILM +/-; BLACKOUT and START/STOP are supposed to controlling with deducted buttons. You can operate the inputs with a switching contact against GND:



The inputs are not potential-free.

PRG+

Switches the next program.

The program sequence corresponds to the sequence writing the files to the SD-card before.

ILM +/-

Adjusted the Master-brightness

Hold pressing for dimming

Release changes the dimming direction

BLACKOUT

Turns on or off the Blackout-function

START/STOP

Starts or stopps the replay (pause)

Proceed the Firmware-Update

The **ArtNet Player 4** has a Firmware-Update-function, which allows transferring further Firmware-versions. A Firmware-update will be executed via the SD-card.

Please proceed as follows:

- Copy Firmware-file (firmware.bin) to SD-card
- Turn off ArtNet Player 4
- Insert SD-card to the device
- Turn on ArtNet Player 4
- The STATUS-LED flashes 10x alternately
- Push button meanwhile until the LED lights permanently
- Wait, until the update has finished (LAN-LED flashes 2x)
- Remove SD-card and delete Firmware-file (firmware.bin)

Accessories

Power supply 12V / 20W



Risk-Notes

You purchased a technical product. Conformable to the best available technology the following risks should not be excluded:

Failure risk: The device can drop out partially or completely at any time without warning. To reduce the probability of a failure a redundant system structure is necessary.

Initiation risk: For the installation of the board, the board must be connected and adjusted to foreign components according to the device paperwork. This work can only be done by qualified personnel, which read the full device paperwork and understand it.

Operating risk: The Change or the operation under special conditions of the installed systems/components could as well as hidden defects cause to breakdown within the running time.

Misusage risk: Any nonstandard use could cause incalculable risks and is not allowed.

Warning: It is not allowed to use the device in an operation, where the safety of persons depend on this device.





DMX4ALL GmbH
Reiterweg 2A
D-44869 Bochum
Germany

© Copyright 2014 DMX4ALL GmbH

All rights reserved. No part of this manual may be reproduced in any form (photocopy, pressure, microfilm or in another procedure) without written permission or processed, multiplied or spread using electronic systems.

All information contained in this manual was arranged with the greatest care and after the best knowledge. Nevertheless, errors are to be excluded not completely. For this reason, I see myself compelled to point out that I can take over neither a warranty nor the legal responsibility or any adhesion for consequences, which decrease/go back to incorrect data. This document does not contain assured characteristics. The guidance and the characteristics can be changed at any time and without previous announcement.