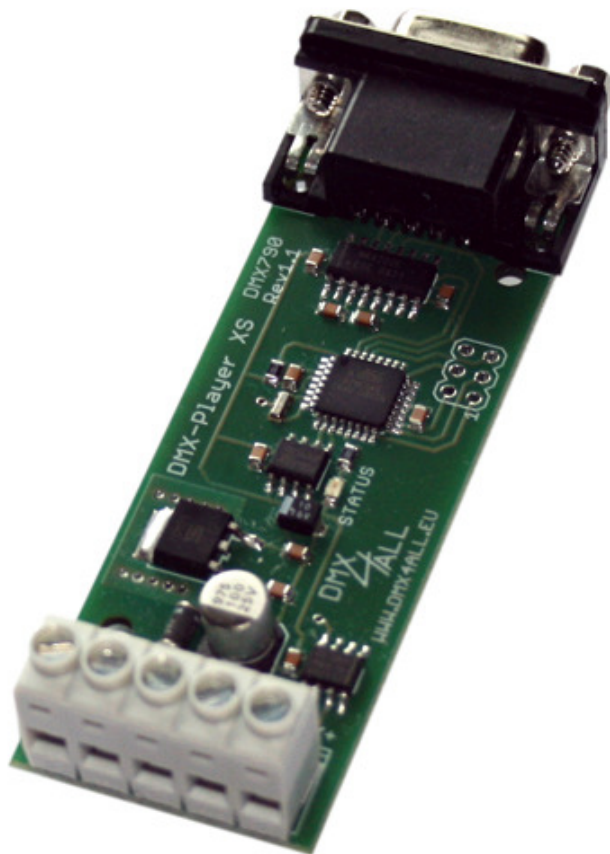


DMX-Player XS

User Manual



Description

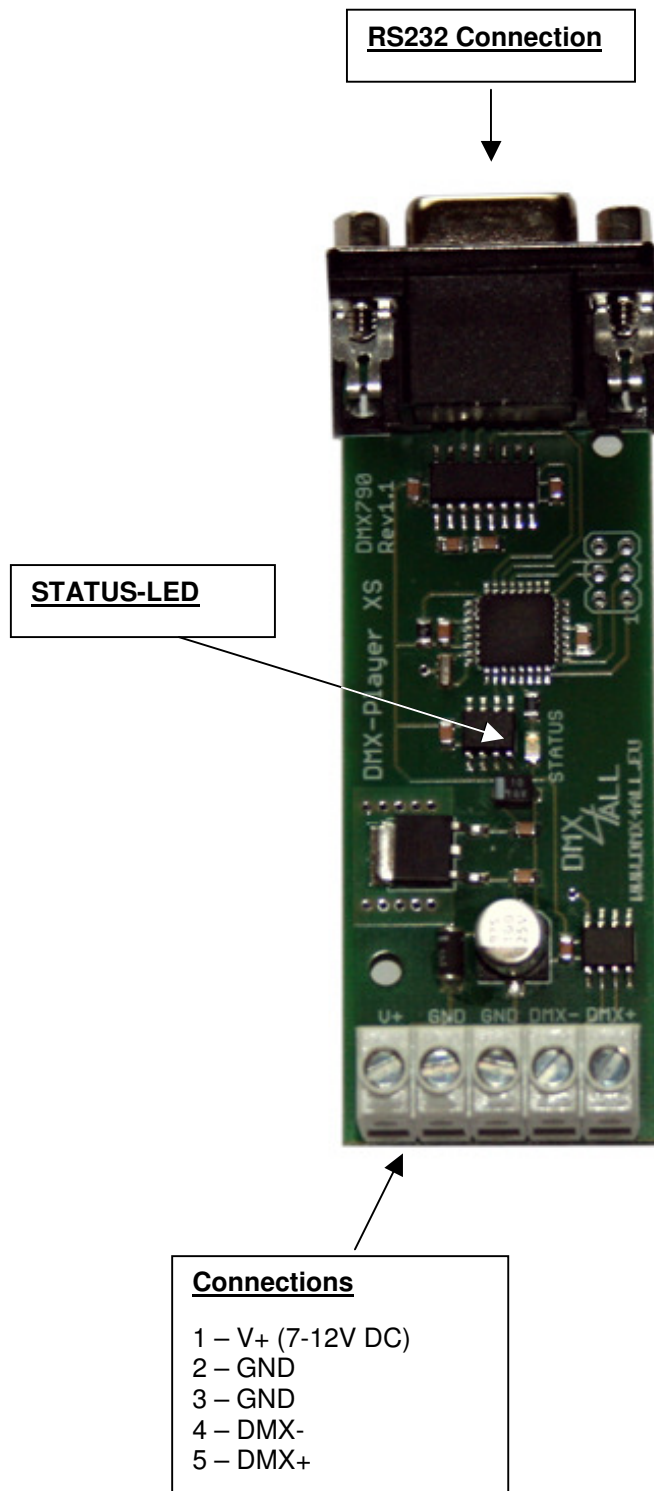
The **DMX-Player XS** is a DMX StandAlone device. The scenes provided in the PC can be loaded by RS232 on the device. Without PC the deposited scenes will be reproduced. An application in the live operation with connected PC is as possible.

Due the easy handling the application is possible in decoration and presentation sections.

Technische Daten

- **Power supply:**
 - 7-12V DC
- **DMX-OUT:**
 - 512 channels on 3 screw clamps
 - RS232-connection for transferring the scenes or for PC-DMX-Interface in live mode
 - 8 kByte Stand-Alone-Memory
- **Board Dimensions:** 82mm x 29,2mm

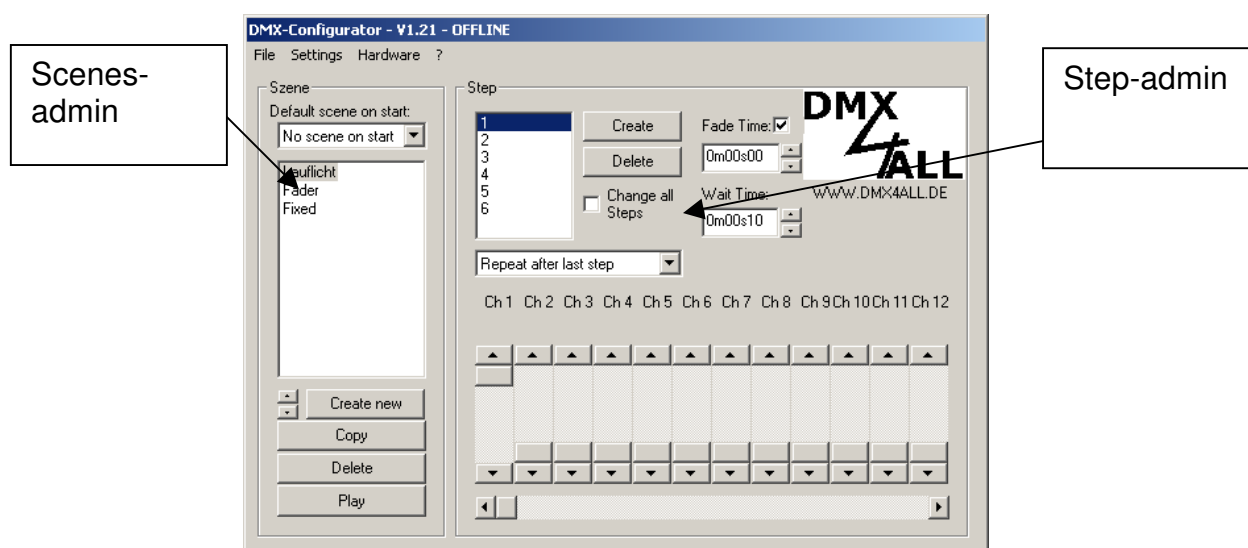
Connections of DMX-Player XS



Programming the StandAlone function

The **DMX-Player XS** has a user programmable StandAlone function. The scenes arranged in the PC (DMX-Configurator) will be transferred once to the interface and then can be replayed.

The software DMX-Configurator serves for the production and programming of the scenes. Under the menu point *Settings*→*Communication settings* the interface above which the DMX-Configurator finds the connected hardware will be set.



In the left part there is the scenes admin. Here the scenes can be set up and fixed in the order.

The right part shows the step admin. Every Scene exists of one step at least. For the setting of different DMX values 12 controller are available. These are marked with the channel number. To reach all 512 DMX channels, you must select the DMX channel area with the underneath horizontal racketeer. For every step different DMX-values can be set for every channel.

Furthermore for every step the fade time and residence time will be set with **Fade Time** and **Wait Time**.

You can write the provided scenes in the StandAlone-memory of the DMX Player XS. The transfer of the scenes to the interface can be started under *Hardware*→*Write data*.

Attention: This process can last some time! Please, do not break off the transfer and wait for certification of the DMX-Configurators.

Equipment

Housing for DIN rail mounting

Top-hat rail housing 350
Art.-Nr.: 50-0050



CE-conformity



This assembly (board) is controlled by a microprocessor and uses high frequency (8MHz). To get the characteristics of the assembly in relation to the CE-conformity, an installation in a compact metal casing is necessary.

Risk-Notes

You purchased a technical product. Conformable to the best available technology the following risks should not be excluded:

Failure risk: The device can drop out partially or completely at any time without warning. To reduce the probability of a failure a redundant system structure is necessary.

Initiation risk: For the installation of the board, the board must be connected and adjusted to foreign components according to the device paperwork. This work can only be done by qualified personnel, which read the full device paperwork and understand it.

Operating risk: The Change or the operation under special conditions of the installed systems/components could as well as hidden defects cause to breakdown within the running time.

Misusage risk: Any nonstandard use could cause incalculable risks and is not allowed.

Warning: It is not allowed to use the device in an operation, where the safety of persons depend on this device.



DMX4ALL GmbH
Reiterweg 2A
D-44869 Bochum
Germany

© Copyright 2010 DMX4ALL GmbH

All rights reserved. No part of this manual may be reproduced in any form (photocopy, pressure, microfilm or in another procedure) without written permission or processed, multiplied or spread using electronic systems.

All information contained in this manual was arranged with largest care and after best knowledge. Nevertheless errors are to be excluded not completely. For this reason I see myself compelled to point out that I can take over neither a warranty nor the legal responsibility or any adhesion for consequences, which decrease/go back to incorrect data. This document does not contain assured characteristics. The guidance and the characteristics can be changed at any time and without previous announcement.