

NanoDMX USB Interface

User Manual



Description

The **NanoDMX USB Interface** is an “adapter cable” which enables a simple control with the PC of DMX-capable devices.

Due to the USB-Port no external power supply is necessary. Each interface is provided with a micro-controller storing the value of all 512 channels and generating the DMX-signal without burding the PC.

To keep down the transmission time on the DMX-line, the interface transfers only so many what's necessary for controlling.

For usage this **NanoDMX USB Interface** with the current software a virtual COM-PORT will be applied in the system. It enables the data transfer like a conventional serial port.

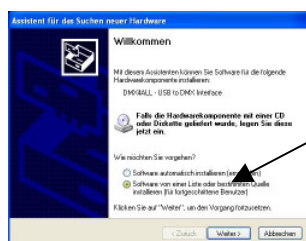
Technical Data

DMX-OUT:	up to 512 channels (44 frames/sec. with 512 DMX-channels)
PC-Connection:	USB, cable length ca. 1m
Power supply:	250mA about USB
USB-driver:	CDC-Driver (virtual COM Port)
Windows® Version:	Windows® 2000 or higher

Windows XP Installation

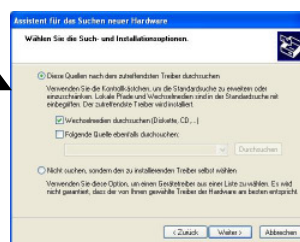
The **NanoDMX USB Interface installation** is based on the Windows® internal CDC-driver. This is a RS232-emulation via USB to Windows2000. By connecting the NanoDMX USB Interface there will be a virtual Com-Port on the PC established. Each Windows program is allowed to access as even the genuine RS232-serial port.

After connecting the **NanoDMX USB Interface** select the driver of the attached CD.



Install a software from a list or another specific source

Searching removeable media



Please execute the following installation steps according to the windows instructions until the installation is completed.

Deactivate the Engine saving mode for USB:

The USB-devices are separated from Windows XP and Windows Vista in the device manager of the system controlling if they are not addresses permanently. This can cause problems for the USB-communication. To avoid this problems the following set ups need to be taken:

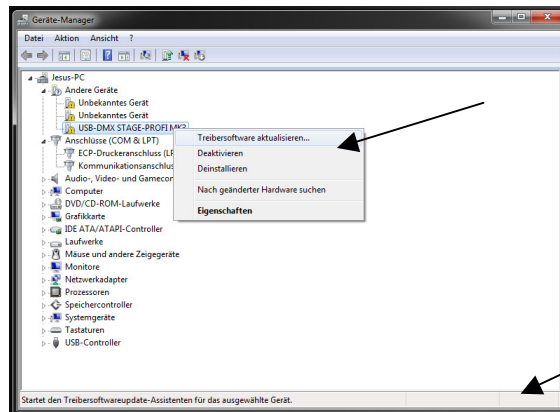
Please deactivate the function *Computer turn off device to save energy (Computer kann Gerät ausschalten, um Energie zu sparen)* under the menupoint *Energy administration*.

Information: It is possible that the modifications will be passed after a restart.

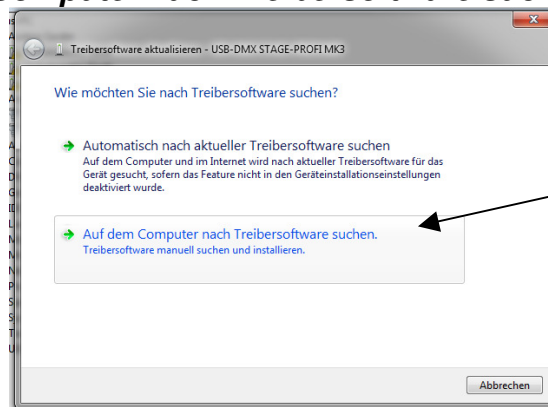
Windows 7 Installation

Please follow the single installation steps for installation:

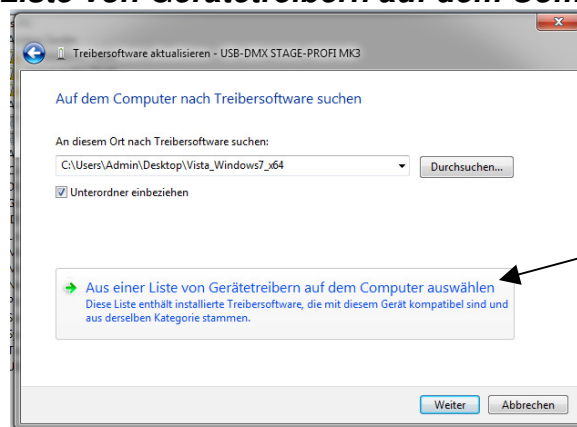
1. Connect the interface to a USB-Port and wait until Windows completed the driver search.
2. Open the device manager and click with the right mouse button at the interface. Select **Driver Software Update**



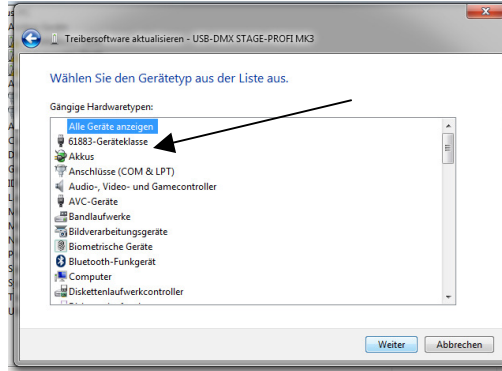
3. Select **Auf dem Computer nach Treibersoftware suchen**



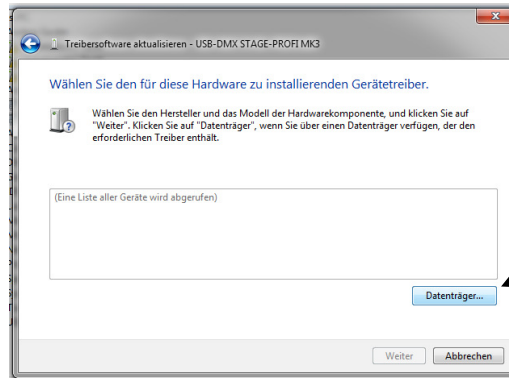
4. Select **Aus einer Liste von Gerätetreibern auf dem Computer auswählen**



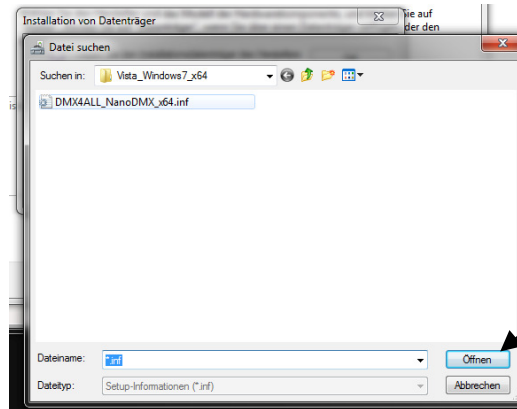
5. **Alle Geräte anzeigen** and click **Next**



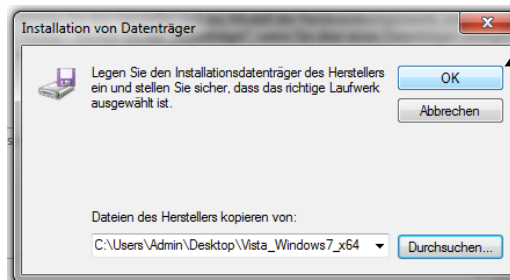
6. Select **Medium**



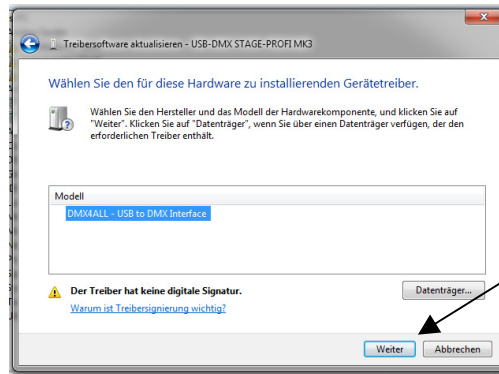
7. Thus select **inf-file** from CD



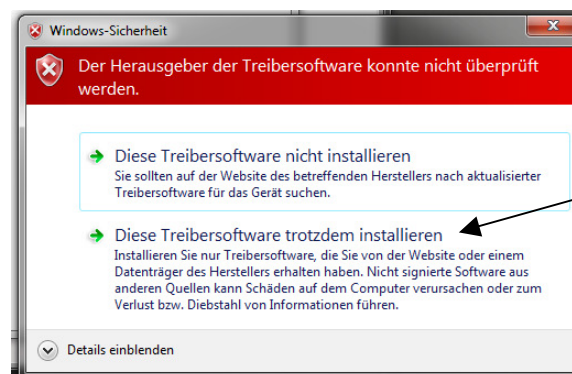
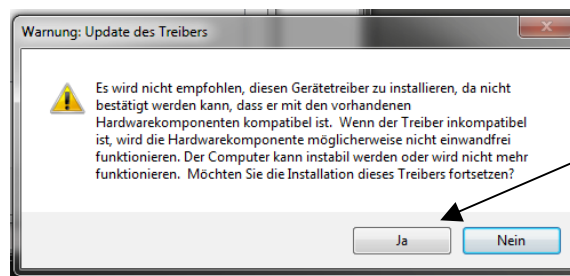
8. Click **OK**



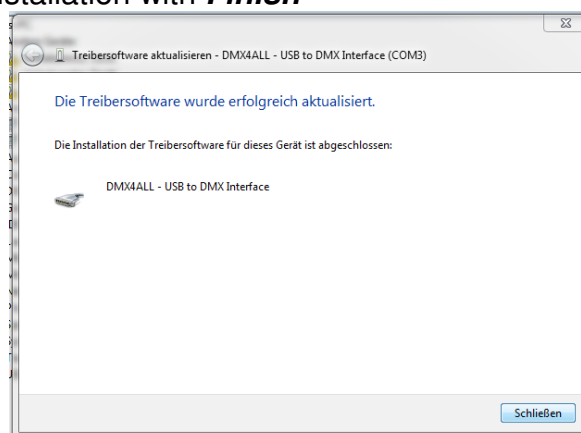
9. Click **Next**



10. Confirm the warnings with **Yes** and **Die Treibersoftware trotzdem installieren**

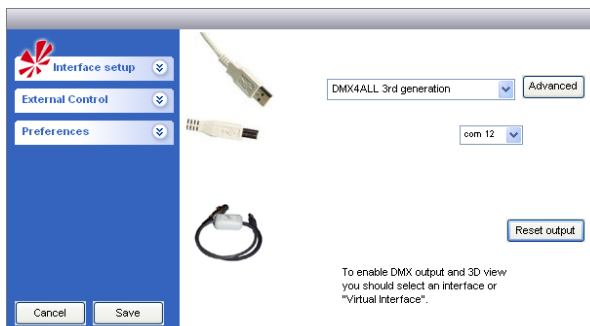


11. Complete the installation with **Finish**



Information for the usage with the program FreeStyler

Please select as device in the *Interface Setup* **DMX4ALL 3rd generation** and select the according COM-Port:



Settings

Use the program **DMX-Configurator** to configurate the interface. You find under the menu *Settings* → *Hardware settings* the possibility for adjusting as follows:

Min Output channels adjusts the number of generated DMX-channels. By right clicking the mouse the selection menu with the number of channels opens.

Note: If you have adjust the number of output channels to one value and if they addresses a higher channel, so up to this channel the DMX-signal will be generated automatically. This number of channels will NOT be stored permanently.

Disable USB serial number

For all interfaces the identical USB-identifier will be used.

Use unique USB serial number

For each interface an unique USB-identifier will be used.

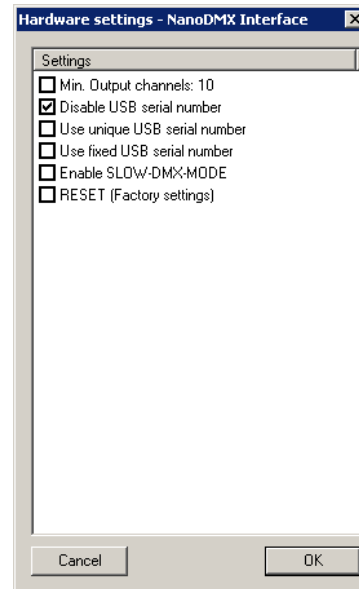
Use fixed USB serial number

Always the same serial number will be used as USB-identifier.

Enable SLOW-DMX-MODE

The number of DMX-frames pro second will be reduced to ca. 33.

After confirming with **OK** the interface will be configured and the settings will be stored permanently. Also after turning off the settings are restored and can be changed only with a renewed configuration.



CE-conformity



This assembly (board) is controlled by a microprocessor and uses high frequency (8MHz). To get the characteristics of the assembly in relation to the CE-conformity, an installation in a compact metal casing is necessary.

Risk-Notes

You purchased a technical product. Conformance to the best available technology the following risks should not be excluded:

Failure risk: The device can drop out partially or completely at any time without warning. To reduce the probability of a failure a redundant system structure is necessary.

Initiation risk: For the installation of the board, the board must be connected and adjusted to foreign components according to the device paperwork. This work can only be done by qualified personnel, which read the full device paperwork and understand it.

Operating risk: The Change or the operation under special conditions of the installed systems/components could as well as hidden defects cause to breakdown within the running time.

Misusage risk: Any nonstandard use could cause incalculable risks and is not allowed.

Warning: It is not allowed to use the device in an operation, where the safety of persons depend on this device.



DMX4ALL GmbH
Reiterweg 2A
D-44869 Bochum
Germany

© Copyright 2013 DMX4ALL GmbH

All rights reserved. No part of this manual may be reproduced in any form (photocopy, pressure, microfilm or in another procedure) without written permission or processed, multiplied or spread using electronic systems.

All information contained in this manual was arranged with the greatest care and after the best knowledge. Nevertheless, errors are to be excluded not completely. For this reason, I see myself compelled to point out that I can take over neither a warranty nor the legal responsibility or any adhesion for consequences, which decrease/go back to incorrect data. This document does not contain assured characteristics. The guidance and the characteristics can be changed at any time and without previous announcement.