

MBDC-200

Modbus data concentrator and gateway



Features

- Modbus/TCP (Ethernet)
- Modbus RTU
- Modbus ASCII
- RS-232, RS-485 or RS-422 layers, software configurable
- Embedded web server for easy configuration and commissioning using a web browser
- Firmware upgradeable via Ethernet

MBDC-200 is an autonomous Modbus data concentrator and collector. The MBDC-200 features two serial ports which can be configured as either RS-232 or RS-485 layer or by combining the two ports as a single RS-422 link. The data concentrator has also an Ethernet port and can be mounted on a DIN rail.

Usage and configuration of the gateway is simple and conveniently performed using a web browser which connects to the embedded web server.

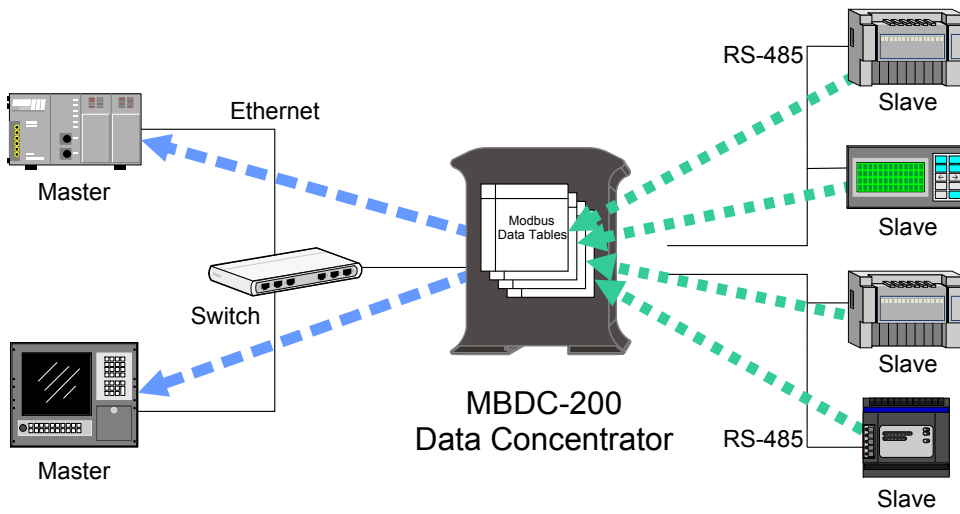
Possible areas of application are:

- PLC connection
- SCADA integration
- Operator panel interfacing
- Remote control & monitoring
- HMIs
- Data logging

MBDC-200

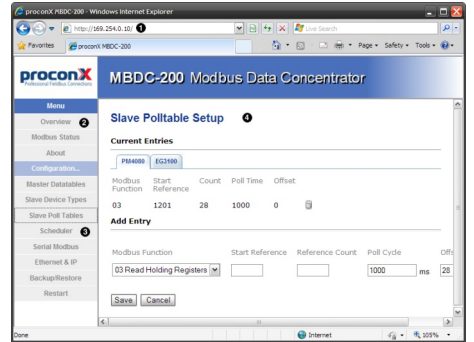


Usage



Order Information

Model number	Configuration
MBDC-200	Data concentrator with Ethernet, 2 serial ports RS-232 or RS-485 or 1 port RS-422, DIN rail enclosure



Connections



Specifications

Interfaces

- 1 Ethernet
- 2 Serial ports:
 - 2 x RS-232 or
 - 2 x RS-485 or
 - 1 x RS-232 + 1 x RS-485 or 1 x RS-422

Serial Port 1

- Modbus RTU
 - Modbus ASCII
- ### RS-485/RS-422
- EIA-485-A, 2-wire or 4-wire
 - 300-115200 bps
 - Up to 32 nodes
- ### RS-232
- EIA-232-F DTE
 - DE9M with EIA-574 pinout
 - RXD, TXD, RTS, CTS, DTR, DSR, DCD, RI signals
 - 300-115200 bps

Serial Port 2

- Modbus RTU
 - Modbus ASCII
- ### RS-485
- EIA-485-A, 2-wire
 - 300-115200 bps
 - Up to 32 nodes
- ### RS-232
- EIA-232-F DTE
 - DE9M with EIA-574 pinout
 - RXD, TXD signals
 - 300-115200 bps

Ethernet port

- Modbus/TCP Slave (8 connections)
- IP, TCP, HTTP, ARP, TFTP
- IEEE 802.3i 10BASE-T
- 1.5 kV galvanic isolation

User interface

- Power, Ethernet and Communication Status LEDs
- Web browser interface for Monitoring & Configuration

Power requirements

- 10-30 V DC, 750 mW
- 30 mA typical @ 24 V DC

High availability

- Watchdog supervision
- Brown-out detection

Electromagnetic compatibility

- Emissions CISPR 22/EN 55022 (Class A)
- Immunity EN55024
- Electrostatic discharge EN61000-4-2
- Radiated RF EN61000-4-3
- Fast transients EN61000-4-4
- Conducted RF EN61000-4-6

Environment

- 0° to 60 °C / 32 to 140 °F operating
- -25° to 80 °C / -13 to 185 °F storage
- 10 to 95% humidity, non-condensing

Form factor / enclosure

- Self-extinguishing PC/ABS (UL 94-V0)
- 35 mm DIN rail mountable
- IP 20 / NEMA Type 1
- Convection cooling
- 101 x 22.5 x 120 mm / 3.98 x 0.886 x 4.72 in
- 0.12 kg / 0.265 lbs

Compliance

- C-Tick
- CE, RoHS
- FCC Part 15 (Class A)
- ICES-003 (Class A)

proconX Pty Ltd
 Unit 7 / 14 Argon St, Sumner QLD 4074, Australia
 Tel +61-3376 3911 Fax +61-7-3102 9206

www.proconX.com
 mail@proconX.com

