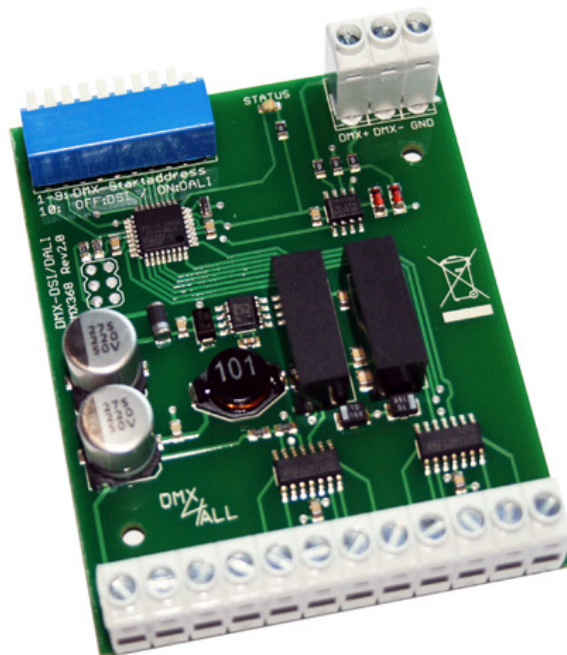


# DMX-DSI/DALI-Interface 8

## User Manual



**DMX** <sup>®</sup>  
**4**  
**ALL**

## Description

With this **DMX-DSI/DALI-Interface** is it possible to control up to 8 DALI- or DSI-capable electric ballasts (EVG).

The following are recommended:

PCA 1/18 ALL4ONE (Tridonic)

PCA 1/36 ALL4ONE (Tridonic)

PCA 1/58 ALL4ONE (Tridonic)

## Technical Data

**Power supply:**

12-24V DC

**DMX-IN:**

8 DMX-channels

**Output:**

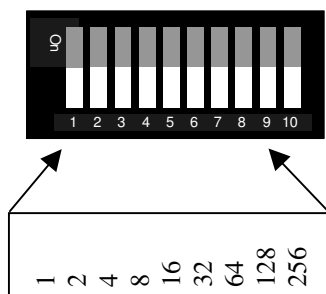
8x DSI or DALI on screw terminals

**Dimensions:**

64,2mm x 82mm

## DMX-Starting address

The starting address is adjustable via the DIP-Switch. Switch 1 has the valency  $2^0$  (=1), switch 2 has the valency  $2^1$  (=2) and so on... finally switch 9 has the valency  $2^8$  (=256). The sum of the switches showing ON represents the starting address.



The shift between DALI and DSI output signal happens via switch 10:

Switch10 ON: DALI-Output signal  
Switch10 OFF: DSI-Output signal

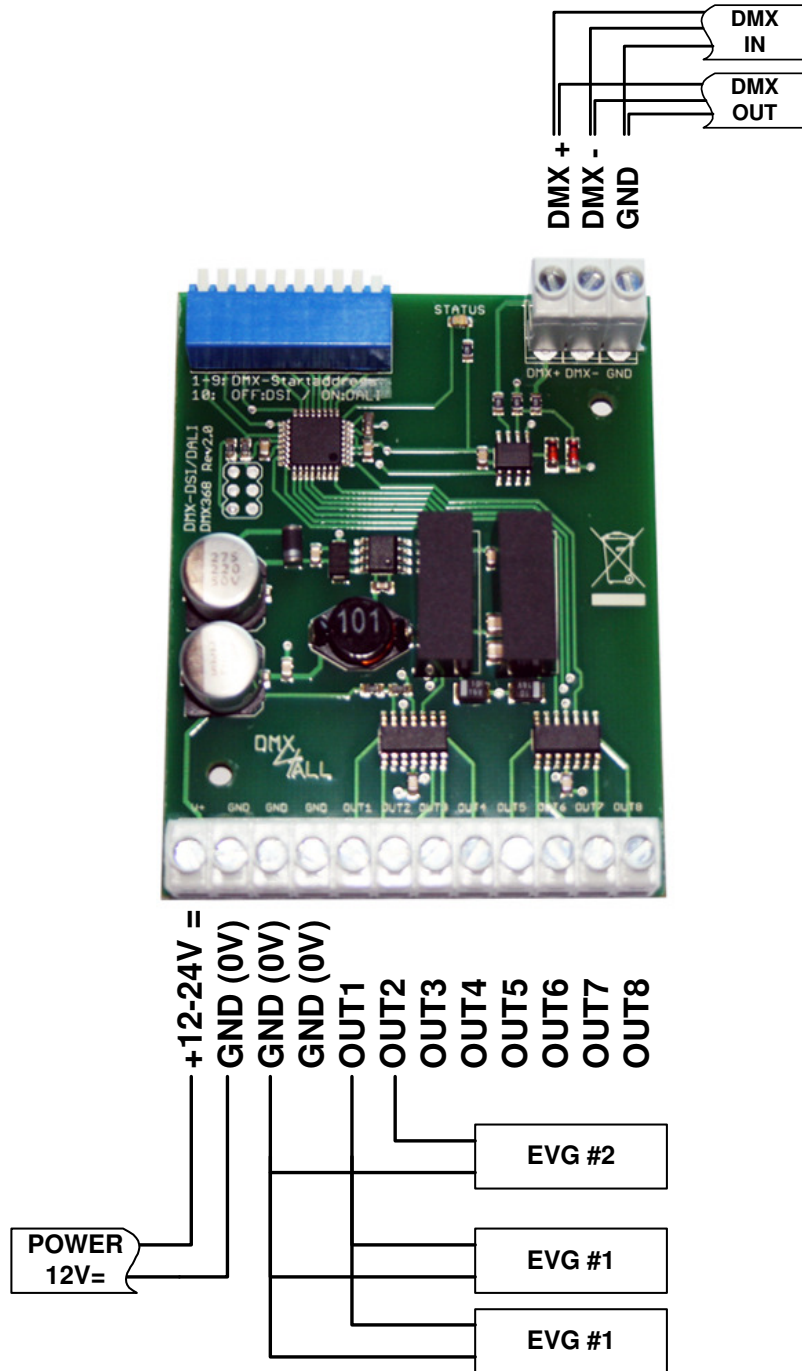
## LED-Display

The integrated STATUS-LED is a multifunctional display. The LED lights non-stop in normal operation. In this case the device is working. There is no DMX512-input-signal if the LED is permanent dark.

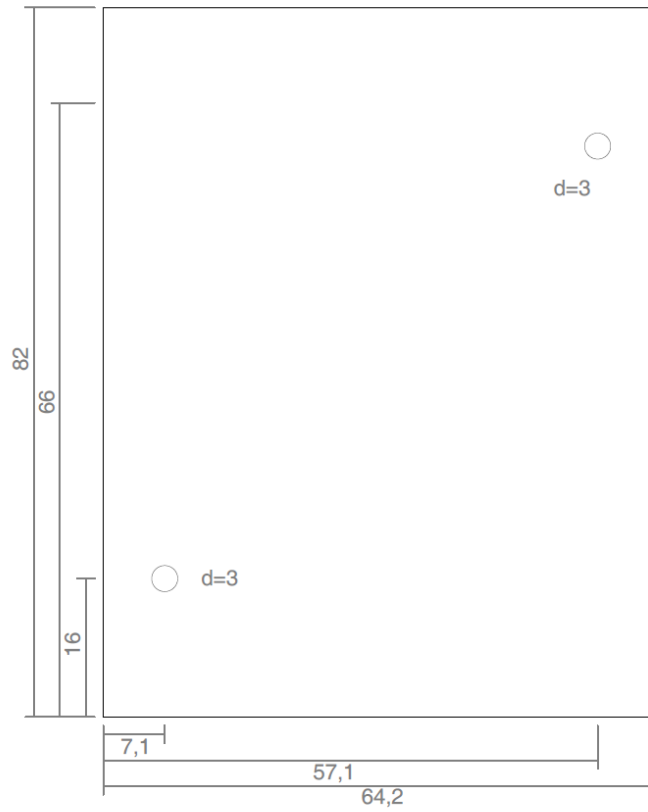
Also, the LED signalled the operation status. In this case the LED lights up in short pitches and then turns into off modus. The number of flashing signals is equal to the number of the error status.

Error Status	Error	Description
2	Address error	Please check if a valid DMX-starting address is adjusted via the DIP-switch.
3	DMX-signal error	An invalid DMX input signal is established. Invert the signal line by changing switch 2 and 3 or use a twisted pair wire.

# Connection



## Dimensions



all units in mm mm

## Equipment

### Housing for DIN-rail mounting 700



### Power supply 12V / 20W



## CE-conformity



This assembly (board) is controlled by a microprocessor and uses high frequency (8MHz). To get the characteristics of the assembly in relation to the CE-conformity, an installation in a compact metal casing is necessary.

## Risk-Notes

You purchased a technical product. Conformance to the best available technology the following risks should not be excluded:

**Failure risk:** The device can drop out partially or completely at any time without warning. To reduce the probability of a failure a redundant system structure is necessary.

**Initiation risk:** For the installation of the board, the board must be connected and adjusted to foreign components according to the device paperwork. This work can only be done by qualified personnel, which read the full device paperwork and understand it.

**Operating risk:** The Change or the operation under special conditions of the installed systems/components could as well as hidden defects cause to breakdown within the running time.

**Misusage risk:** Any nonstandard use could cause incalculable risks and is not allowed.

**Warning:** It is not allowed to use the device in an operation, where the safety of persons depend on this device.



DMX4ALL GmbH  
Reiterweg 2A  
D-44869 Bochum  
Germany

© Copyright 2014 DMX4ALL GmbH

All rights reserved. No part of this manual may be reproduced in any form (photocopy, pressure, microfilm or in another procedure) without written permission or processed, multiplied or spread using electronic systems.

All information contained in this manual was arranged with largest care and after best knowledge. Nevertheless errors are to be excluded not completely. For this reason I see myself compelled to point out that I can take over neither a warranty nor the legal responsibility or any adhesion for consequences, which decrease/go back to incorrect data. This document does not contain assured characteristics. The guidance and the characteristics can be changed at any time and without previous announcement.