

# MBRG-300

## Managed Modbus router and gateway



 **EtherNet**

**Modbus**

**RS-485**

**RS-232**

**Dual Port**

### Features

- Modbus/TCP (Ethernet)
- Modbus RTU
- Modbus ASCII
- RS-232, RS-485 or RS-422 layers, software configurable
- Embedded web server for easy configuration and commissioning using a web browser
- Firmware upgradeable via Ethernet

**MBRG-300** is an advanced Modbus gateway and router. The MBRG-300 features two serial ports which can be configured as either RS-232 or RS-485 layer or by combining the two ports as a single RS-422 link. The router has also an Ethernet port and can be mounted on a DIN rail.

Usage and configuration of the gateway is simple and conveniently performed using a web browser which connects to the embedded web server.

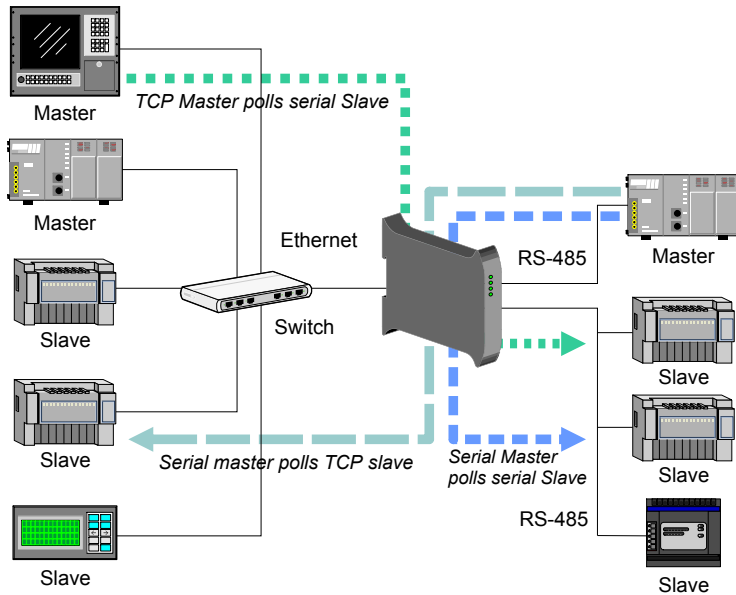
Possible areas of application are:

- PLC connection
- SCADA integration
- Operator panel interfacing
- Remote control & monitoring
- HMIs
- Data logging

# MBRG-300

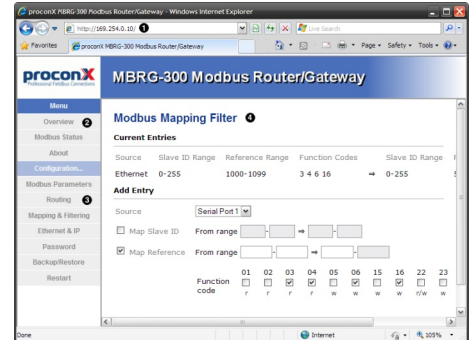


## Usage



## Order Information

| Model number | Configuration  |
|--------------|--|
| MBRG-300     | Router with Ethernet, 2 serial ports RS-232 or RS-485 or 1 port RS-422, DIN rail enclosure |



## Connections



## Specifications

### Interfaces

- 1 Ethernet
- 2 Serial ports:
  - 2 x RS-232 or
  - 2 x RS-485 or
  - 1 x RS-232 + 1 x RS-485
  - or 1 x RS-422

### Serial Port 1

- Modbus RTU
  - Modbus ASCII
- RS-485/RS-422**
- EIA-485-A, 2-wire or 4-wire
  - 300-115200 bps
  - Up to 32 nodes
- RS-232**
- EIA-232-F DTE
  - DE9M with EIA-574 pinout
  - RXD, TXD, RTS, CTS, DTR, DSR, DCD, RI signals
  - 300-115200 bps

### Serial Port 2

- Modbus RTU
  - Modbus ASCII
- RS-485**
- EIA-485-A, 2-wire
  - 300-115200 bps
  - Up to 32 nodes
- RS-232**
- EIA-232-F DTE
  - DE9M with EIA-574 pinout
  - RXD, TXD signals
  - 300-115200 bps

### Ethernet port

- Modbus/TCP Slave (8 connections)
- Modbus/TCP Master
- IP, TCP, HTTP, ARP, TFTP
- IEEE 802.3i 10BASE-T
- 1.5 kV galvanic isolation

### User interface

- Power, Ethernet and Communication Status LEDs
- Web browser interface for Monitoring & Configuration

### Power requirements

- 10-30 V DC, 750 mW
- 30 mA typical @ 24 V DC

### High availability

- Watchdog supervision
- Brown-out detection

### Electromagnetic compatibility

- Emissions CISPR 22/EN 55022 (Class A)
- Immunity EN55024
- Electrostatic discharge EN61000-4-2
- Radiated RF EN61000-4-3
- Fast transients EN61000-4-4
- Conducted RF EN61000-4-6

### Environment

- 0° to 60 °C / 32 to 140 °F operating
- -25° to 80 °C / -13 to 185 °F storage
- 10 to 95% humidity, non-condensing

### Form factor / enclosure

- Self-extinguishing PC/ABS (UL 94-V0)
- 35 mm DIN rail mountable
- IP 20 / NEMA Type 1
- Convection cooling
- 101 x 22.5 x 120 mm / 3.98 x 0.886 x 4.72 in
- 0.12 kg / 0.265 lbs

### Compliance

- C-Tick
- CE, RoHS
- FCC Part 15 (Class A)
- ICES-003 (Class A)

proconX Pty Ltd  
Unit 7 / 14 Argon St, Sumner QLD 4074, Australia  
Tel +61-3376 3911 Fax +61-7-3102 9206

www.proconX.com  
mail@proconX.com

**proconX**  
Professional Fieldbus Connections